

# Evacuation Update

- May 1<sup>st</sup> E.G. CERT Meeting
- May 11<sup>th</sup> CFPD Drill – El Granada Blvd
  - Detailed Flyer on MCC Website
- Outstanding Risks
- Discussion

**May 8, 2024**

# Notes from Dave Cosgrave:

- The May 1st discussion was for the El Granada Prepared Group on all risk (EQ, Tsunami Fire...) but the main discussion was on the May 11th drill.
- Exercise for the public was to learn about the **Hi-Lo Time To Go** program that is new to San Mateo County (*Except Belmont*)
- Subscribe to SMC Alert
- Load and use the Genasys Protect App (*New App for the company that took over Zonehaven*).

# Evacuation Notes

- The "Evacuation" is voluntary... in a real evacuation the first responders would designate a Temporary Evacuation Point (TEP). The El Granada School would **not** be a TEP for a fire in El Granada. The 3 Primary planned county TEP locations are the Skyline, CSM, and Cañada colleges. Again the TEP would be determined with the information available **at the time of the dynamic need**.
- The TEP is not a required reporting location, it is a place for people that have nowhere else to go; it will take a while to get any services to any location set up.
- There are only 2 drills planned at this time: one Coastside (Top of El Granada) and one Bayside (Palomar Park).

# Evacuation Preparedness

- On Red Flag Days, pay attention and be SET (*Ready, SET, Go!*)
- No alerting system will beat Self Situational Awareness
  - If we have days without nighttime fog and cooling (usually Red Flag) and there is smoke coming your way, you are behind the curve if you are waiting for an evacuation order.
  - Leaving early is the best option.

# Notes from Residents – Part 1

- Purpose of the May 1 meeting at Station 41 was to provide information about the upcoming May 11 Evacuation Drill, and evacuation in general.
- Purpose of the Evacuation Drill is to increase awareness as well as to use this as a test to gather data for use with software modeling. This will aid with helping them to provide more realistic future plans.
- This is the first of many evacuation drills for testing purposes, and only SMC-E092 in El Granada is planned for evacuation on May 11.

# Notes from Residents – Part 2

- Encourage residents in real evacuation situations to have a **to-go bag** already packed and be ready to leave in no more than **ten minutes**. The longer it takes to leave your house, the longer it will take to get to safety due to all the residents who will be evacuating.
  - Put your pet in its crate prior to anything else as they may be hard to find after seeing owner racing around to gather needed items, and may hide.
- Encouraged residents to become a Fire Wise community.
  - Insurance cost reductions
  - Homes Are The Fuel



# Homes Are The Fuel



# Concerns from Resident

- David stated that his biggest fear is a major quake on the Hayward Fault with destruction of infrastructure - Hetch Hetchy water, power transmission, highways & bridges, sewer, etc. Although the direct damage here on the coast would probably not be major - the effects on food, power and water could last for an indefinite period.
- This test will evacuate 355 autos. How can we evaluate adequacy of plans when over 2,000 autos are trying to flee with smoke and burning embers?



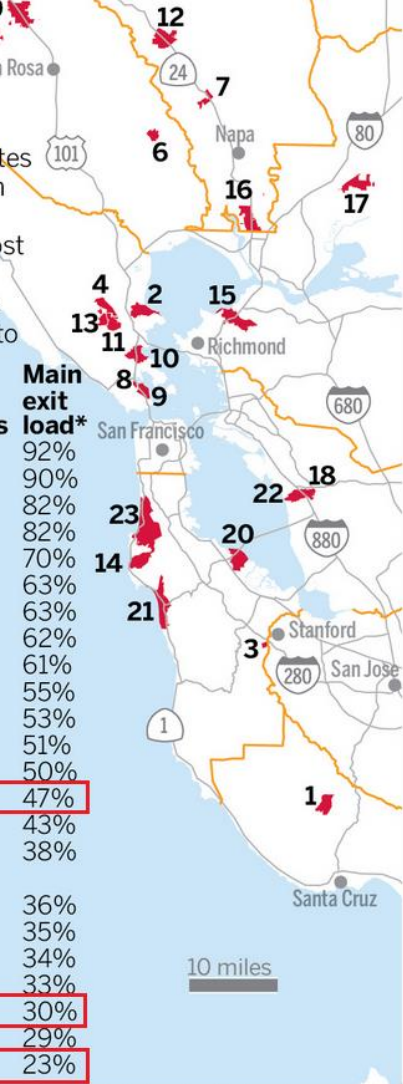
# Our Evacuation Situation

## TOUGHER EVACUATIONS

Based on population, exit routes and other factors, residents in these communities of fewer than 40,000 would be the most prone to getting stuck in the event of an evacuation from a major emergency, according to a new nationwide analysis.

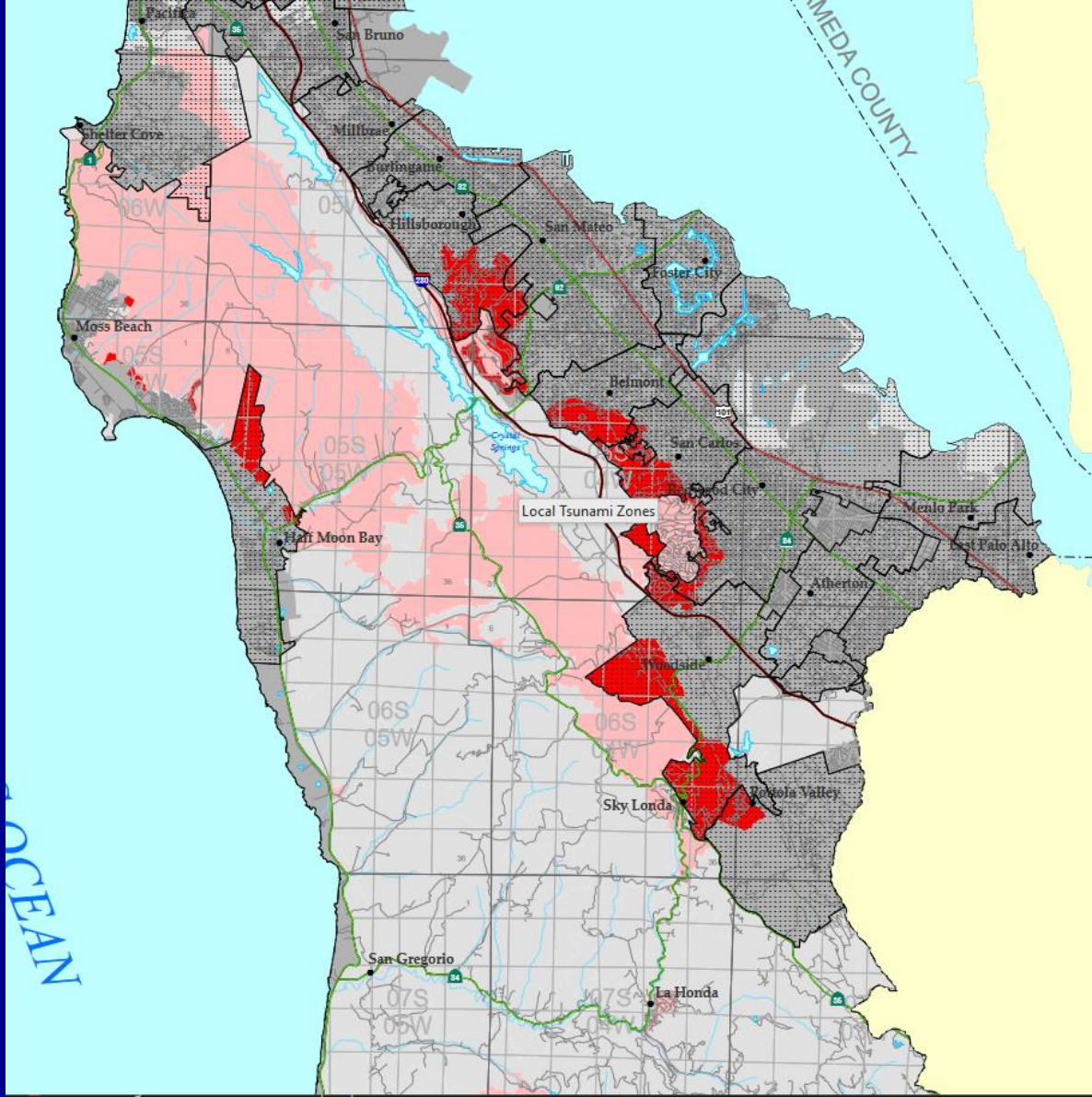
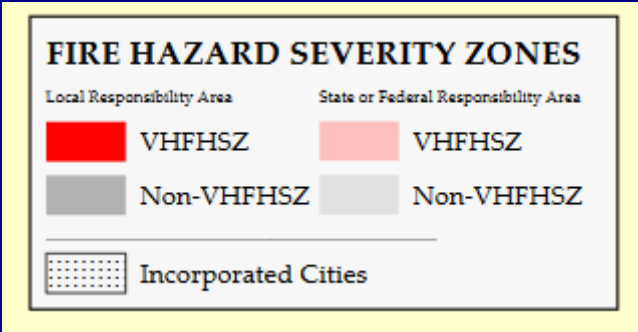
Place	Population	Exits	Main exit load*
1 Lompico	1,137	2	92%
2 Santa Venetia	4,132	5	90%
3 Ladera	1,426	2	82%
4 Sleepy Hollow	2,363	7	82%
5 Bodega Bay	1,077	4	70%
6 Agua Caliente	4,099	3	63%
7 Yountville	2,005	5	63%
8 Marin City	2,666	4	62%
9 Sausalito	7,061	7	61%
10 Corte Madera	9,378	7	55%
11 San Anselmo	12,615	7	53%
12 St. Helena	5,764	6	51%
13 Fairfax	7,539	5	50%
14 Montara	2,909	3	47%
15 Pinole	18,520	10	43%
16 American Canyon	19,441	8	38%
17 Suisun City	27,977	9	36%
18 Cherryland	15,166	8	35%
19 Windsor	26,809	11	34%
20 Foster City	30,463	8	33%
21 Half Moon Bay	11,322	6	30%
22 San Lorenzo	23,452	7	29%
23 Pacifica	31,713	8	23%

\*The percentage of residents who typically use a "main" street as their primary exit in and out of town. So a main exit load of 33% would mean there is a 33 percent probability that residents will chose the most popular street as their main exit route  
Source: StreetLight Data



Courtesy: Harald Herrmann, RIP

# Wildfire Risks





# Unfinished Business: Quarry Park Wildfire Risk

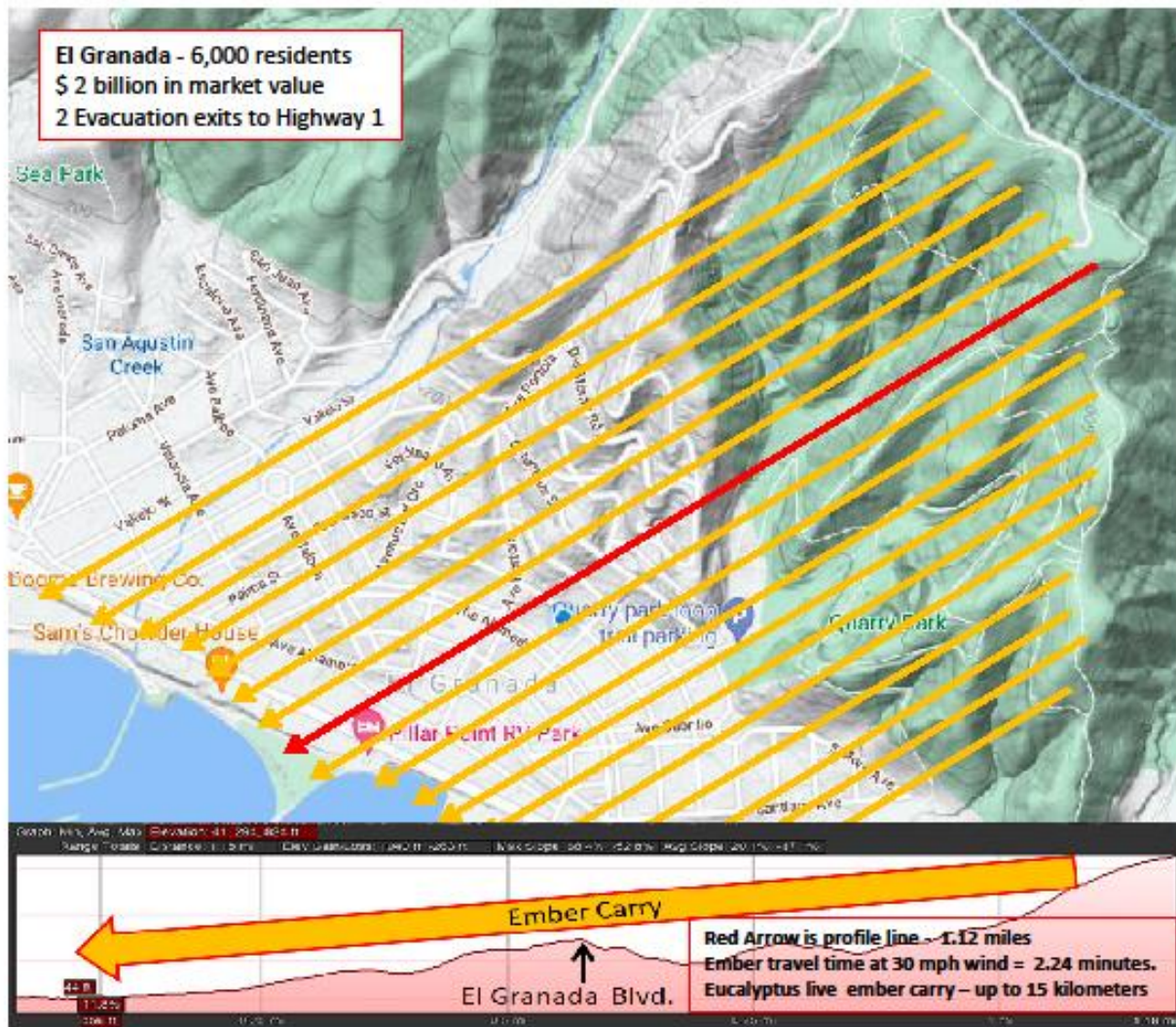
- **Red line** is the VHF Zone. The **yellow** shows area where Parks have done work using wildfire funds since 2017. **Blue** is the median tree removal
- Incomplete EGB fire break in highest risk area next to homes
- No follow-up on simulation study of priority areas.



# Canopy Wildfire Risk

Similar  
conditions to  
Oakland Hills  
Firestorm of  
1991

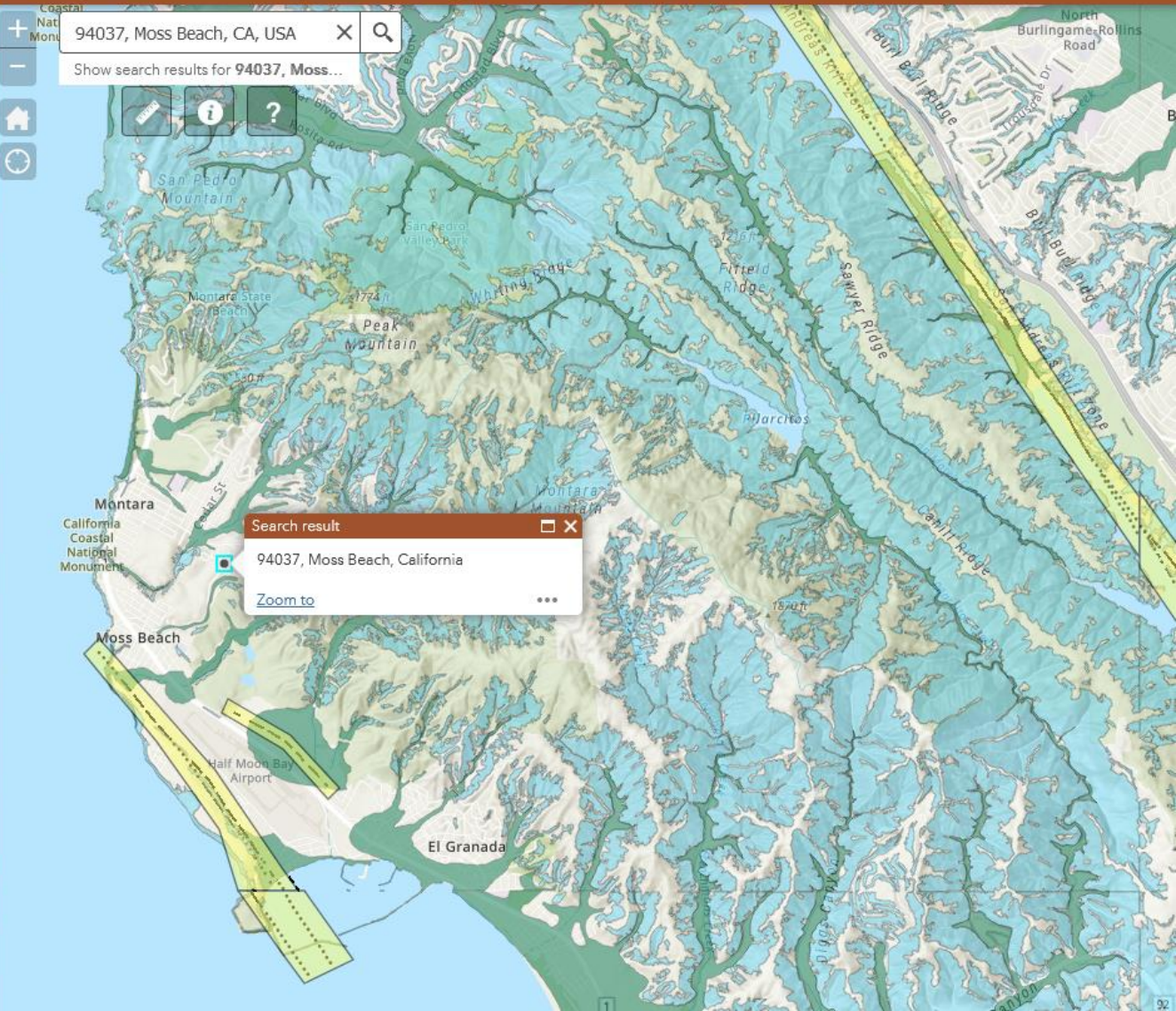
Ember Carry Path mapped to “Fire Weather” Wind Path



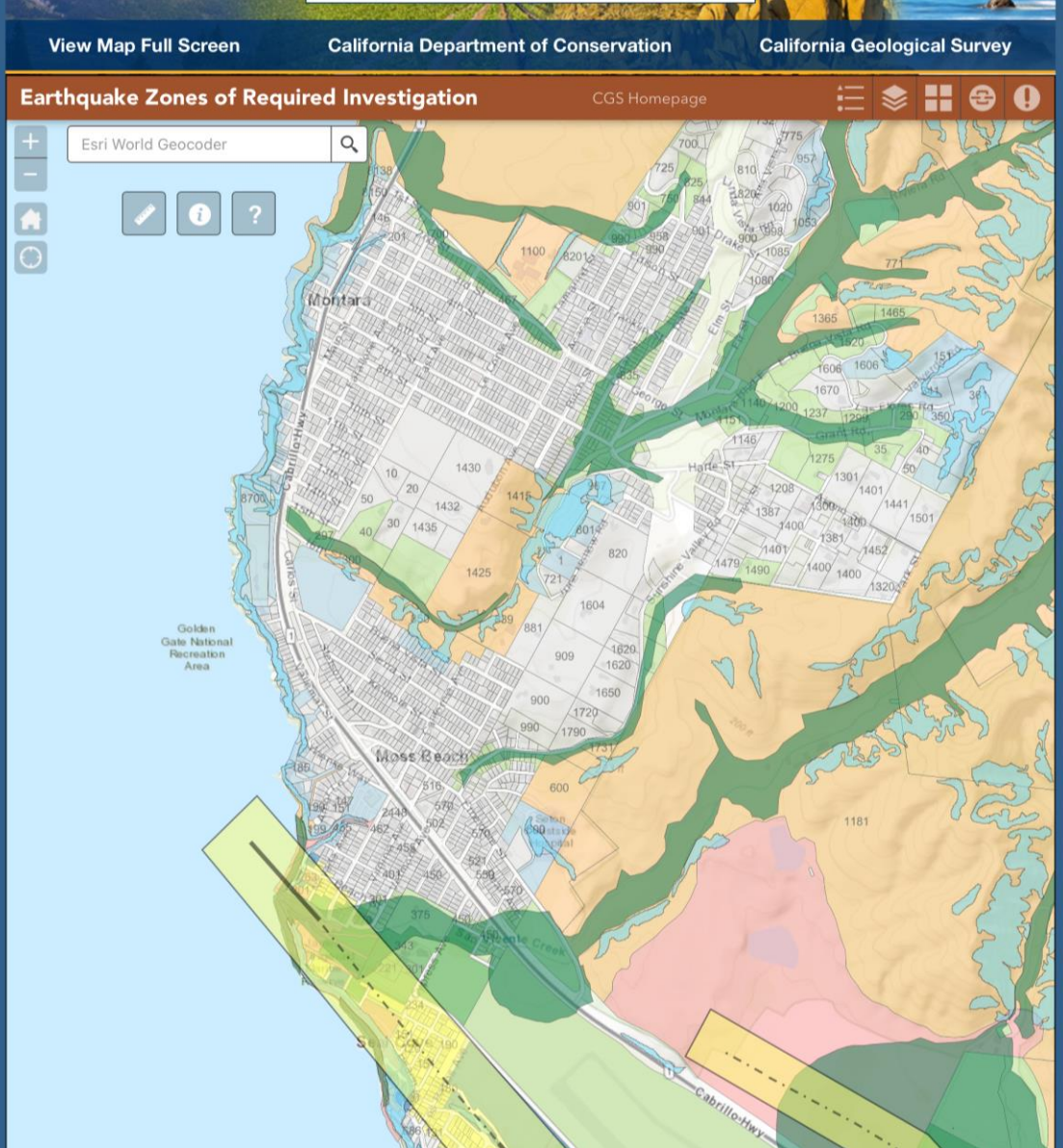
**Diablo  
Wind  
Always  
From  
ENE**  
(Graph  
received from  
Calfire  
SAPGIS Group –  
15 years of  
data).



# Local Earthquake Faults



# Moss Beach Earthquake Liquefaction Zones









# Midcoast Rainfall Intensity

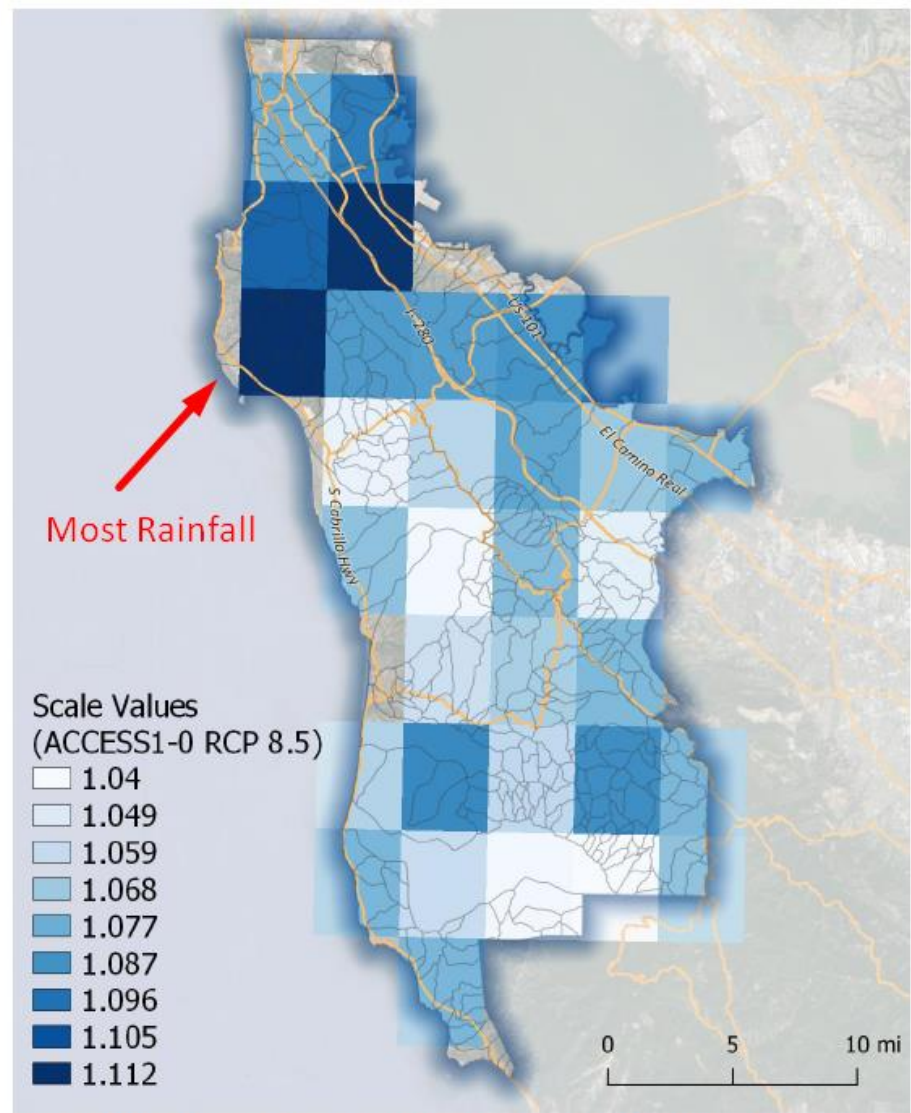


Figure 1-8. Example ratios of future to historical precipitation for GCM ACCESS1-0, RCP 8.5 for a 10-year, 6-hour storm.

# Hwy 1 Evacuation Choke Points

- North of Lantos Tunnel (trees falling block Hwy 1)
- Surfers Beach
- More Tall Trees:
  - Frenchman's Creek
  - Medio Creek
  - El Granada Medians
  - Much of Montara

# Lifeline Communications Deficiencies

MCC Work Group led by Leo Gomez

- Inadequate internet & cell coverage and speed
- Unreliable services (redundancy, backup power)
- Amateur Emergency Radio Communications
- No oligopoly, or regulator, cures likely
- Dozens of recommendations in report...
  - Option: forming a **Community Fiber Network\***
- Findings endorsed by local agencies
- **Need: Funding for Feasibility Study**

\* Hundreds of communities nationwide:

<https://communitynets.org/content/community-network-map>



# Hwy 1

Time to Get Moving, the Road, that is...

[Link to Hwy 1 study](#)

## STATE ROUTE 1 at Surfer's Beach

### ADAPTIVE CAPACITY, CONSEQUENCES, AND POTENTIAL ADAPTATION

#### Adaptive Capacity

The overall adaptive capacity of the asset is low. However, in the near-term, adaptive capacity is moderate as Caltrans is engaged in routine maintenance to maintain road access and repair the road expeditiously following a disruption.

Future adaptive capacity to sea level rise is low because alternate routes, such as Avenue Alhambra and Obispo Road, are a slow and short-term alternative during temporary closures on this section of road. These routes are not considered suitable permanent alternatives for the volume of SR1 traffic, and they do not provide beach access.

SENSITIVITY  
High

EXPOSURE  
High

ADAPTIVE CAPACITY  
Low

CONSEQUENCES  
High

### ASSET CHARACTERISTICS

#### Cabrillo Highway (SR1) | El Granada

#### Asset Description and Function:

In El Granada, SR1 passes Coronado Street and Pillar Point RV Park at Surfer's Beach, primarily serving automobile, truck, and bicycle travel. The road is on a small cliff above the beach. Surfer's Beach serves 20,000 people locally, and the road accommodates an average of 28,000 cars per day. SR1 provides regional and wider tourist access to many small businesses, residential communities, beaches, and coastal state parks. There is a stormwater line under SR1 which runs north of the highway.

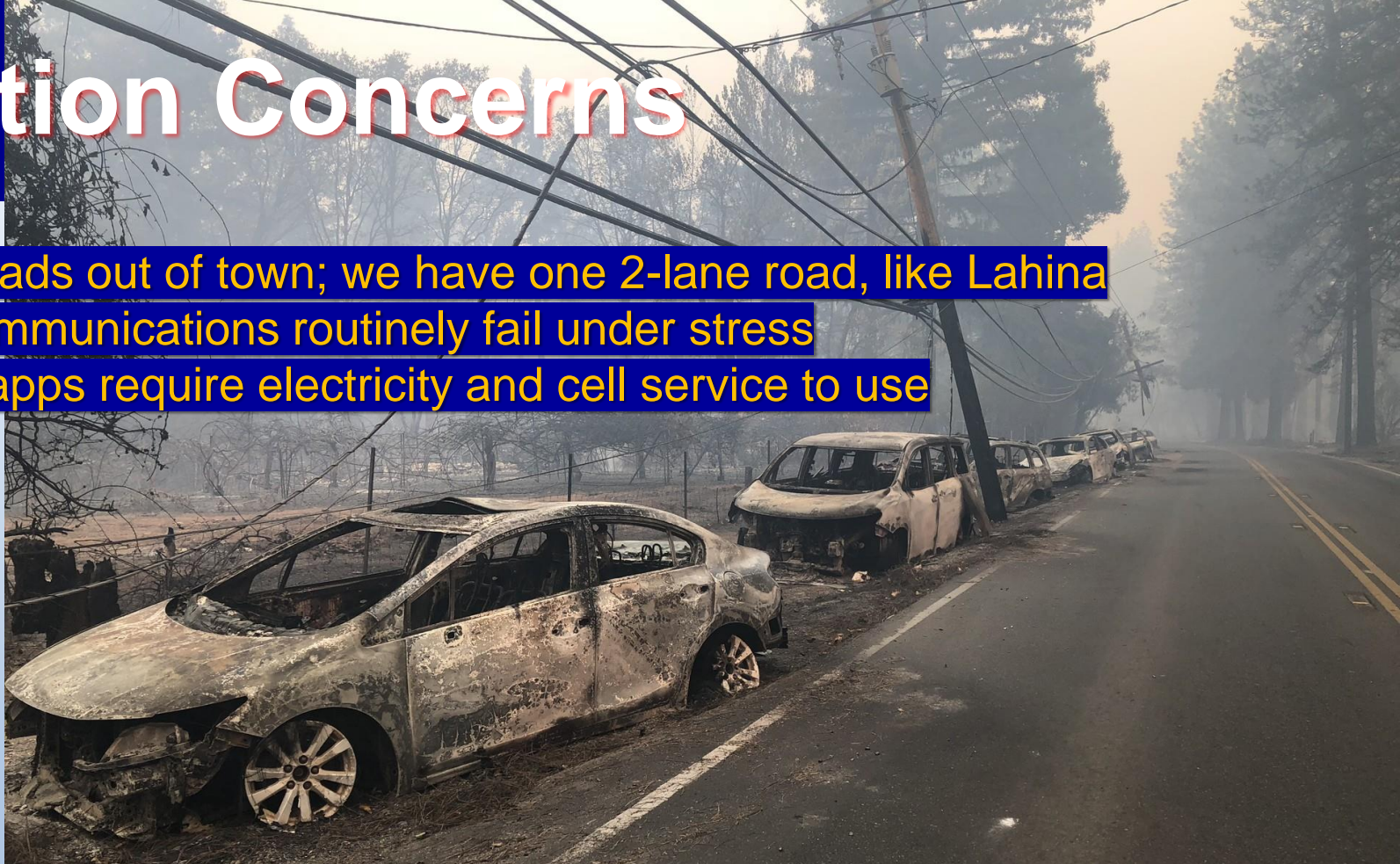
Transportation Issues - 2023





# Evacuation Concerns

- ✓ Paradise had 5 roads out of town; we have one 2-lane road, like Lahina
- ✓ Power and telecommunications routinely fail under stress
- ✓ Web-based alert apps require electricity and cell service to use



- ✓ Roads often clogged with visitors unknowing about Midcoast disaster protocols
- ✓ The County keeps permitting more population...

**End of slides:  
now, Open Discussion**