

CALIFORNIA DEPARTMENT OF TRANSPORTATION, DISTRICT 4

State Route 1 MULTI-ASSET ROADWAY REHABILITATION PROJECT

PUBLIC MEETING - DRAFT ENVIRONMENTAL DOCUMENT

JULY 21, 2022

6:00 PM - 7:30 PM

Format for Today's Meeting

Welcome

INTRODUCTIONS AND MEETING LOGISTICS

- Kelly Ma (Caltrans)
- Dillon Lennebacker (AECOM)

CALTRANS PRESENTATION

- Provide overview and status of the project
- Announce the availability of the Draft Initial Study for public comment
- Next Steps

QUESTION & ANSWER SESSION

- Get feedback from our audience

Asking Questions During Q&A

- Type your questions into the Q&A feature at bottom of screen.
- Call Broden directly with your questions:
510-768-9095.
- Comments made during the presentation are not considered formal comments on the Draft Initial Study.
- All formal comments must be submitted in writing.



How to Submit Comments



U.S. Mail

John Seal, *Associate Environmental Scientist*
Caltrans District 4
PO Box 23660, MS 8B
Oakland, CA 94623-0660



Email

John.Seal@dot.ca.gov

August 8, 2022

Is the last day to
submit comments

Project Overview

LOCATION & SCOPE

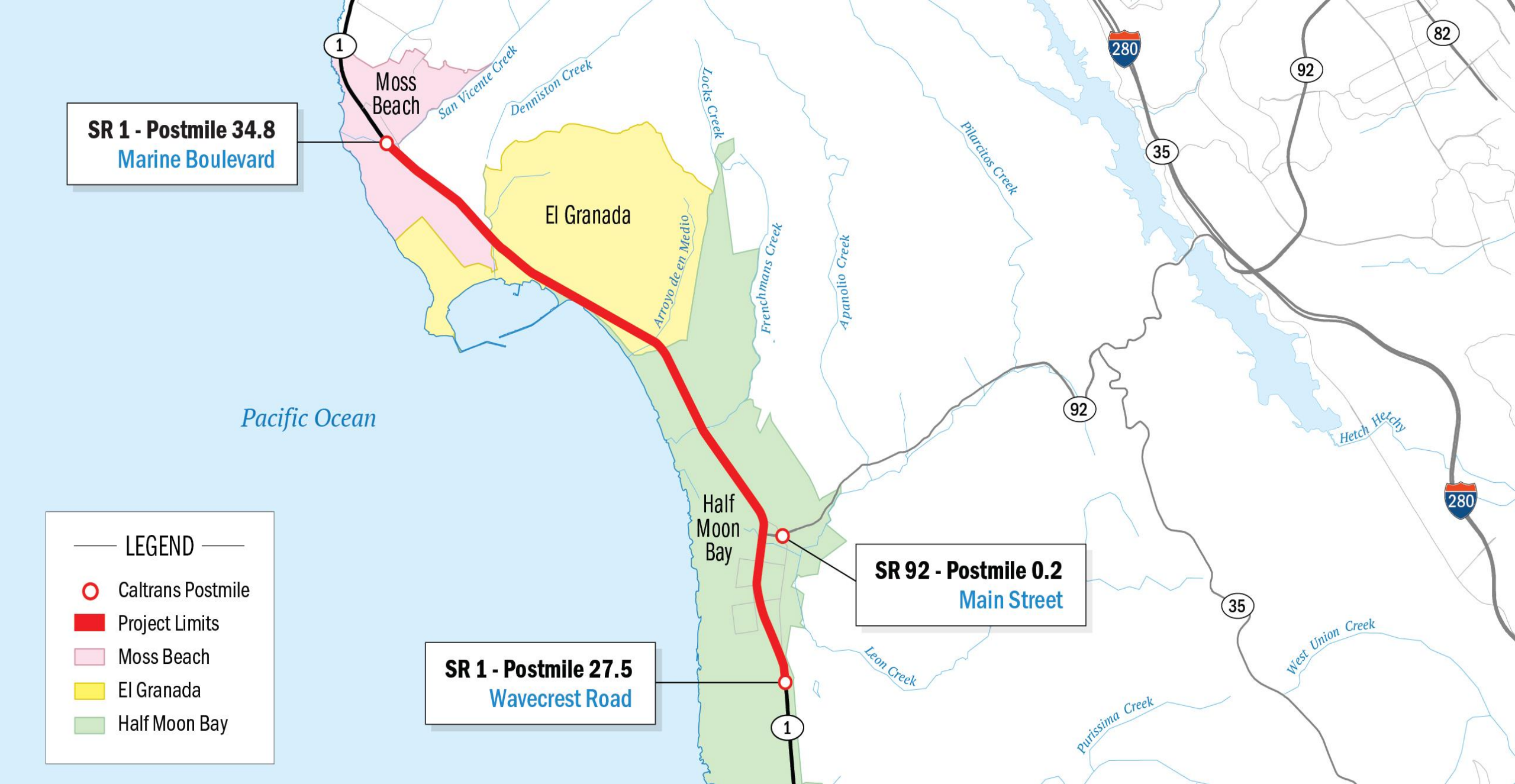
Purpose and Need

Purpose:

- Preserve, improve, and extend the life of the roadway
- Minimize future maintenance expenditures
- Upgrade existing traffic system infrastructure and improve roadway safety
- Enhance bicycle and pedestrian access

Need:

- Poor ride quality – roadways will continue deteriorating if left untreated
- Highway facilities are worn out or functionally obsolete
- Current traffic systems are approaching their end-of-life and need to be upgraded
- Encourage and maximize multi-modal transportation opportunities

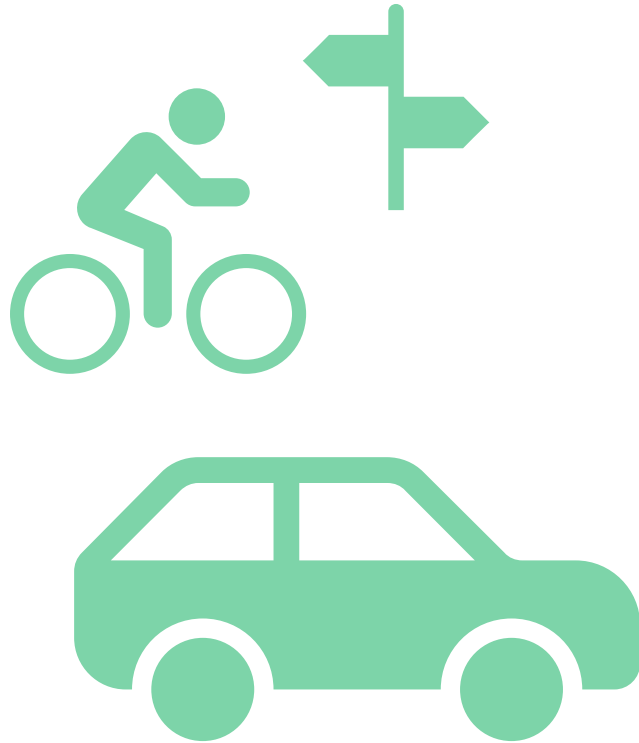


State Highway Operation and Protection Program (SHOPP)



- This project is part of the SHOPP program
- SHOPP is a "Fix-it-first" program to fund:
 - repair and preservation
 - emergency repairs
 - safety improvements
 - some highway operational improvements
- Primarily funds projects that rehabilitate roadways/roadsides and improve safety or operations

Project Scope



- Rehabilitate roadway
- Upgrade guardrails
- Rehabilitate drainage systems
- Improve bus stops
- Upgrade facilities to Americans with Disabilities Act (ADA) standards
- Incorporate bicycle improvements
- Meet Caltrans Complete Streets guidance
- Upgrade traffic management system (TMS) elements

Pavement Rehabilitation

Existing pavement quality north of Miramar



Photos courtesy of Google Images

Pavement Rehabilitation

- Caltrans Postmile
- Project Limits
- ▨ El Granada
- ▨ Half Moon Bay
- ▨ Moss Beach



AECOM, 2021
ESRI Basemap, 2016
CPAD, 2020



Guardrail Upgrades: Existing and Proposed

→ Existing



→ Proposed:
Midwest Guardrail System



Photos courtesy of Google Images

Roadway Rehabilitation and Guard Rail Replacement

- ⊗ Guard Rail Replacement Location
- Caltrans Postmile
- █ Pavement Rehabilitation Limits
- ▨ El Granada
- ▨ Half Moon Bay
- ▨ Moss Beach



AECOM, 2021
ESRI Basemap, 2016
CPAD, 2020

SR 1 PM 34.8
Marine Blvd

SR 1 PM 27.5
Wavecrest Rd



Drainage System Rehabilitation

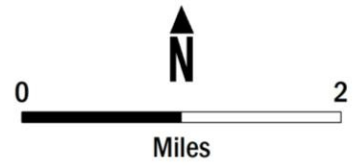
- 1 Drainage Culvert
- 2 Drainage Dike





Drainage Improvements

- Drainage Facility
- Caltrans Postmile
- Pavement Rehabilitation Limits
- El Granada
- Half Moon Bay
- Moss Beach



AECOM, 2021
 ESRI Basemap, 2016
 CPAD, 2020

Bike/Pedestrian, Complete Street Improvements, and ADA Upgrades

- 1 Class II Bike Lane
- 2 Class II Bike Lane (*Buffered*)
- 3 Striped Crosswalks
- 4 ADA-Compliant Curb Ramp



Bus Stop Improvements



Current sidewalk gap at Terrace Avenue bus stop

Bike, Ped, and Complete Street Improvements

-  Transit Stop Paving Location
-  Complete Street Intersection Improvement
-  Caltrans Postmile
-  Class I Bike Path
-  Class II Bike Lane
-  Sidewalk
-  Pavement Rehabilitation Limits
-  El Granada
-  Half Moon Bay



AECOM, 2021
 ESRI Basemap, 2016
 CPAD, 2020



Traffic Management System Elements



Traffic Monitoring System



Fixed Intersection Camera
(Closed-circuit television)



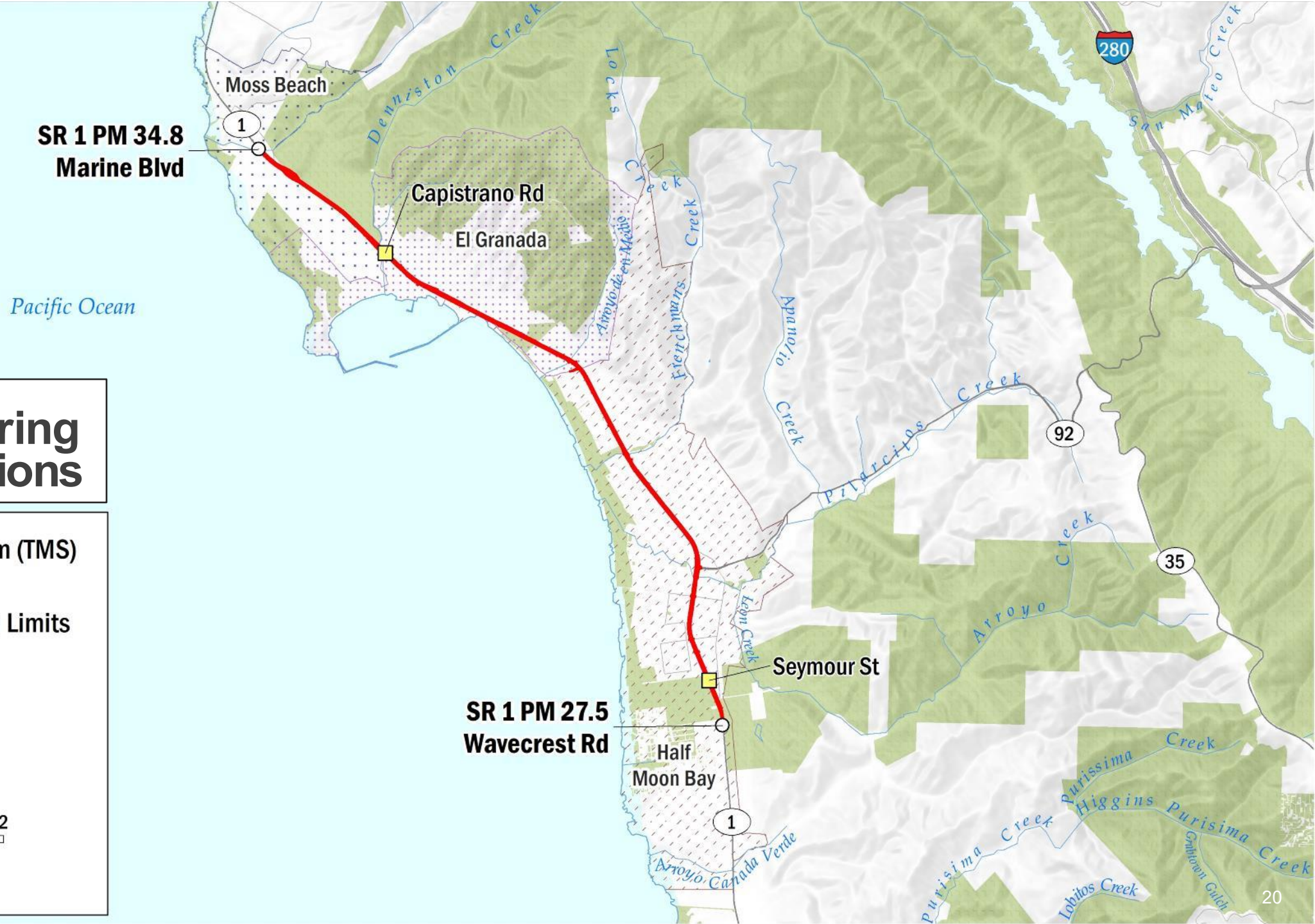
Dome Camera
(Closed-circuit television)

Traffic Monitoring System Locations

-  Traffic Monitoring System (TMS)
-  Caltrans Postmile
-  Pavement Rehabilitation Limits
-  El Granada
-  Half Moon Bay
-  Moss Beach



AECOM, 2021
ESRI Basemap, 2016
CPAD, 2020



Fixed Intersection Camera Locations

-  Fixed Intersection Camera
-  Caltrans Postmile
-  Pavement Rehabilitation Limits
-  El Granada
-  Half Moon Bay
-  Moss Beach



AECOM, 2021
 ESR1B-000000-2016
 CPAU, 2020

ROADWAY REHABILITATION PROJECT

SR 1 PM 34.8
 Marine Blvd

Capistrano Rd/Ave Alhambra

El Granada

Coronado St

Ruisseau Francais Ave

North Main St

Route 92

Main St

Kelly Ave

Poplar St

South Main St

SR 1 PM 27.5
 Wavecrest Rd

Half Moon Bay

Moss Beach

1

280

92

35

1

Closed Circuit Television (CCTV) Camera Locations

- ▲ Closed Circuit Television (CCTV) Camera
- Caltrans Postmile
- █ Pavement Rehabilitation Limits
- ▨ El Granada
- ▨ Half Moon Bay
- ▨ Moss Beach



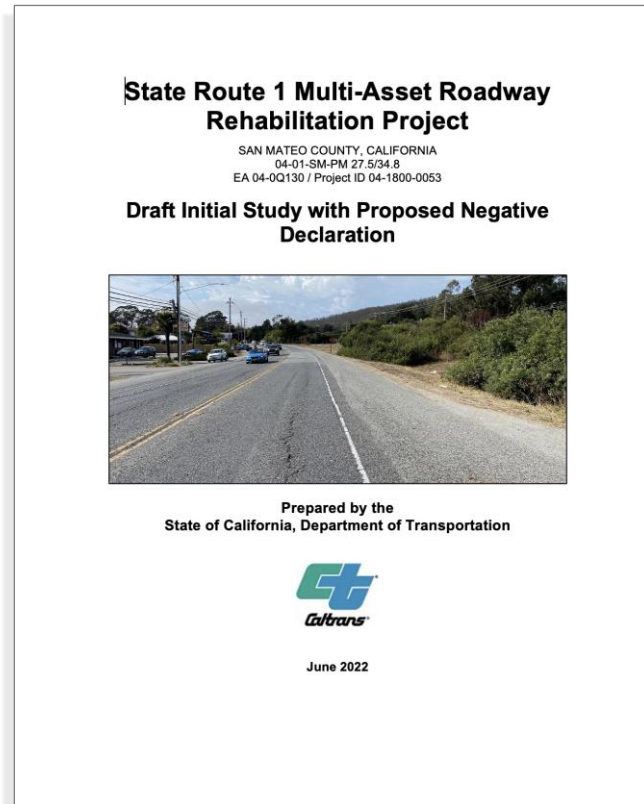
Miles
AECOM, 2021
ESRI Basemap, 2016
CPAD, 2020



Environmental Document

DRAFT INITIAL STUDY/PROPOSED NEGATIVE DECLARATION (IS/ND)

What is an Environmental Document?



- Meets California Environmental Quality Act (CEQA) requirements
- Identifies environmental impacts of a proposed project
- Demonstrates compliance with state and/or federal laws
- Informs decision of whether to proceed with project



Available online at
www.CaltransD4Environmental.com

What is an Initial Study/Negative Declaration (IS/ND)?

To comply with CEQA, we have prepared a Draft Initial Study and proposed Negative Declaration for this project.

- An **Initial Study** (IS):
 - determines the relative environmental impacts associated with a proposed project.
 - needs to show that a project will not have a significant environmental impact or that the impacts can be mitigated to a *less than significant* or *no impact* level.
- A **Negative Declaration** (ND) is prepared when:
 - there is no substantial evidence that the project may have a significant effect on the environment.

Environmental Topics Covered in Document

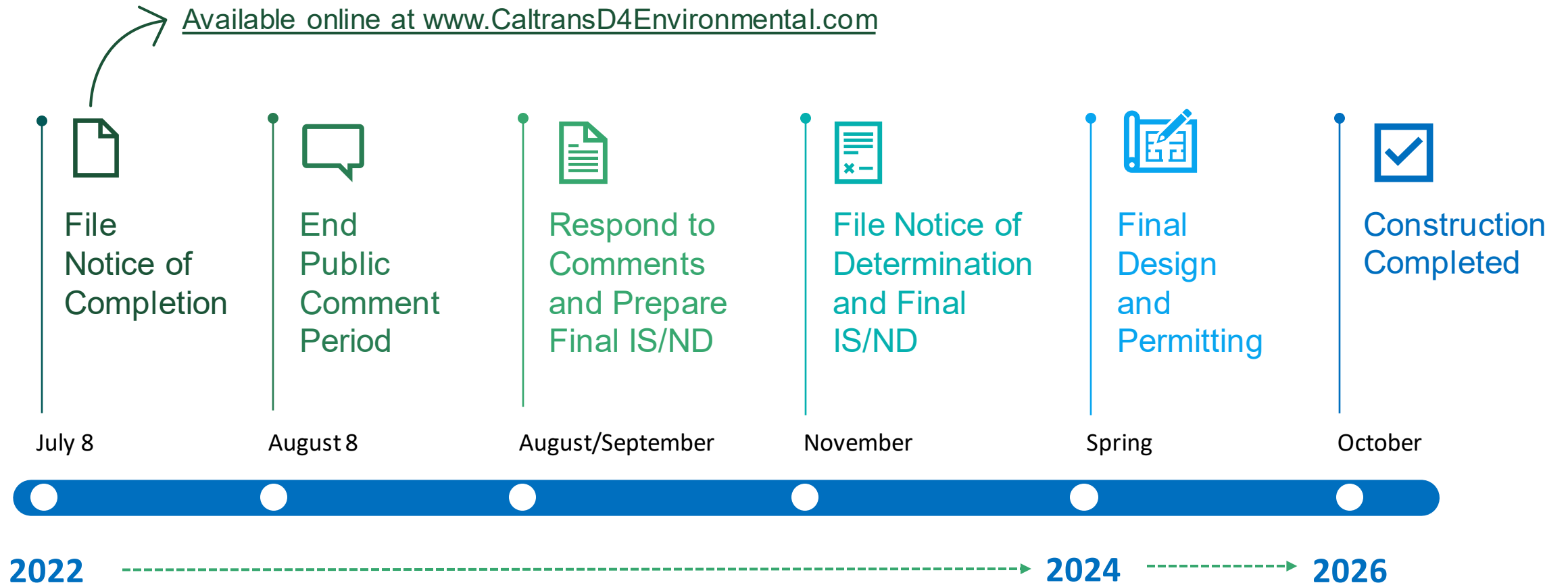


- Aesthetics
- Biological Resources
- Energy
- Geology & Soils
- Greenhouse Gas Emissions
- Hazards & Hazardous Materials
- Hydrology & Water Quality
- Land Use & Planning
- Transportation
- Wildfire

Next Steps

OUR PROCESS

Project Milestones



We Want to Hear From You!



U.S. Mail

John Seal, *Associate Environmental Scientist*
Caltrans District 4
PO Box 23660, MS 8B
Oakland, CA 94623-0660



Email

John.Seal@dot.ca.gov

REMEMBER

August 8, 2022

Is the last day to
submit comments

What Happens with Your Comments



- Each written comment submitted will be recorded and reviewed by the project team and added into the final IS with a response.
- If comments reveal new information not already covered in the IS/ND, the team will revise the document to address the new information.
- We expect to have all revisions completed and our Final Initial Study/Negative Declaration (IS/ND) ready for release in Fall 2022
- If the project is given environmental approval and funding is obtained, Caltrans could design and construct all or part of the project.

Q & A

Asking Questions During Q&A

- Type your questions into the Q&A feature at bottom of screen.
- Call Broden directly with your questions:
510-768-9095.





THANK YOU!

WWW.CALTRANS.D4ENVIRONMENTAL.COM

JOHN.SEAL@DOT.CA.GOV